

## What is a monarch?

|                |   |
|----------------|---|
| <i>battle</i>  | <i>A fight between two armies.</i>  |
| <i>conquer</i> | <i>To take control of a country.</i>  |
| <i>defend</i>  | <i>Resist an attack.</i>  |
| <i>invade</i>  | <i>To take over a country.</i>  |
| <i>power</i>   | <i>Having the authority to make important decisions on behalf of a country.</i> |
| <i>rule</i>    | <i>To be in charge.</i>   |



### Bayeux Tapestry

*A long piece of decorated fabric that tells the story of the Norman Conquest of England in 1066.*

### Constitutional monarchy



*King Charles III, 2022.*

*Credit: UK Parliament / Roger Harris  
Contributor: Xinhua / Alamy Stock Photo*

### Coronation

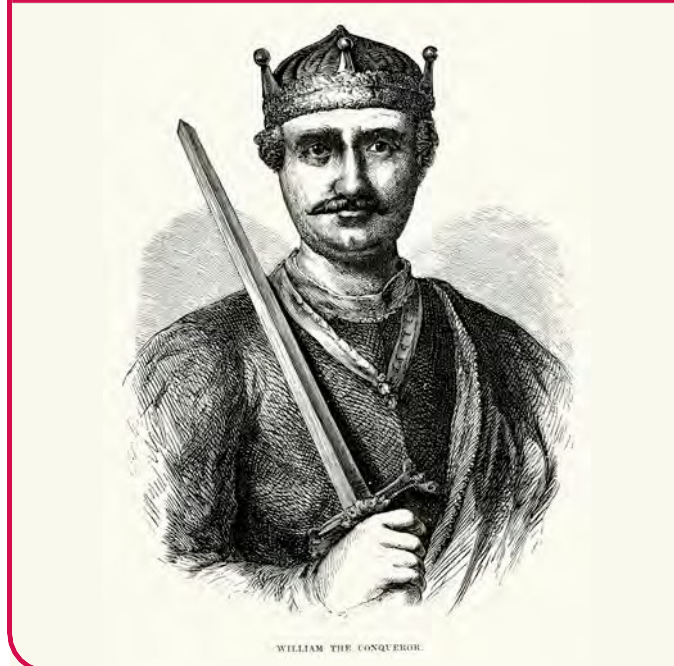


*A special religious ceremony where a new king or queen is crowned.*

*Queen Elizabeth II's Coronation, 1953.*

*Credit: Chronicle / Alamy Stock Photo*

### Absolute monarchy



*William the Conqueror, 1066*

Iron Age fort



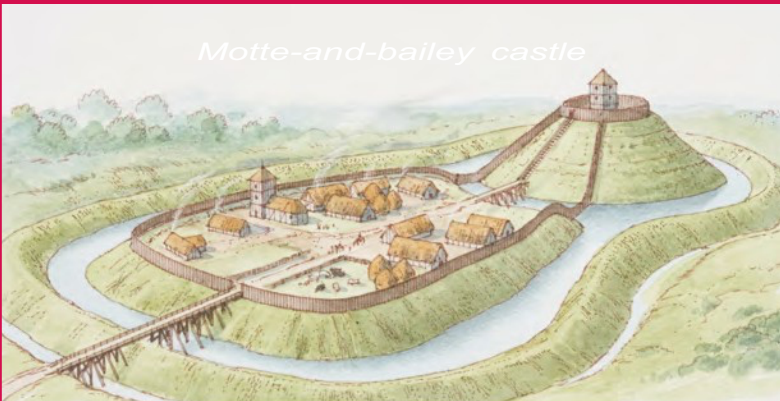
Concentric castle



Fortified manor



Motte-and-bailey castle



Stone keep castle



Parts of a castle

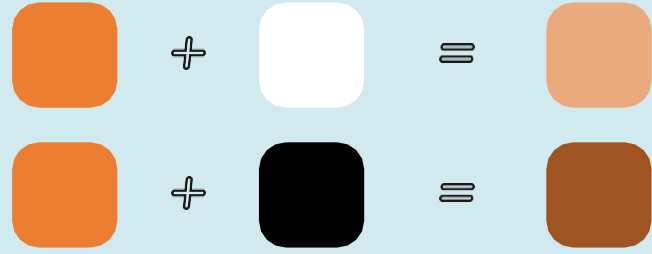
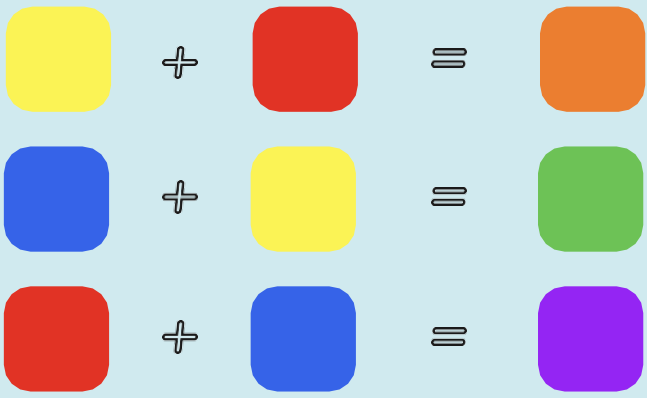
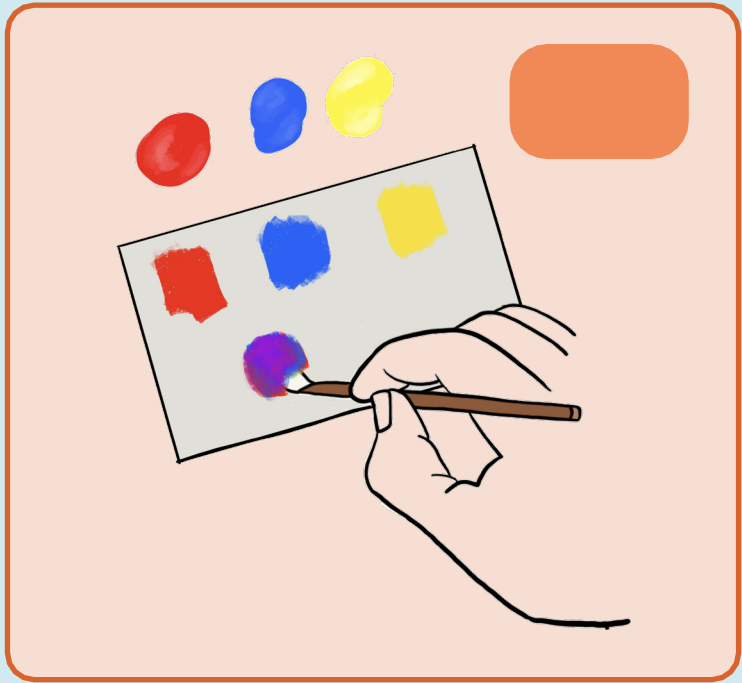
Created by Jordan / Alamy Stock Photo



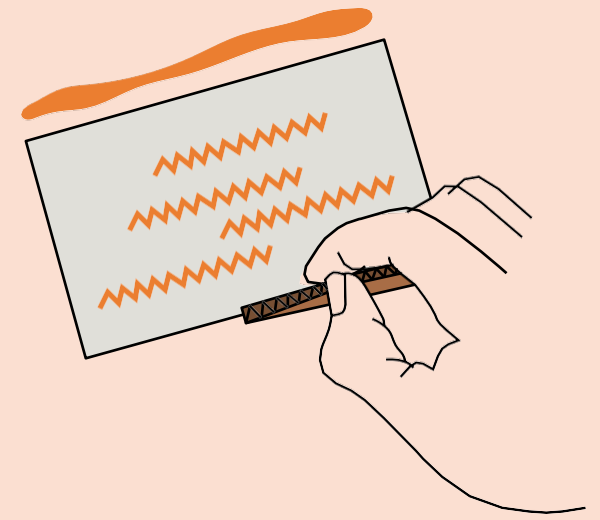
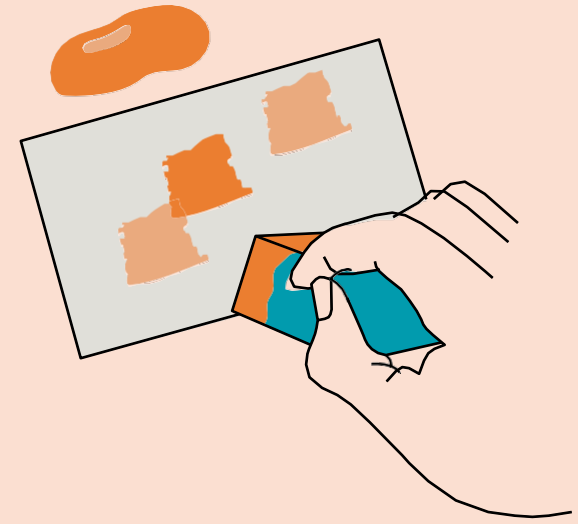
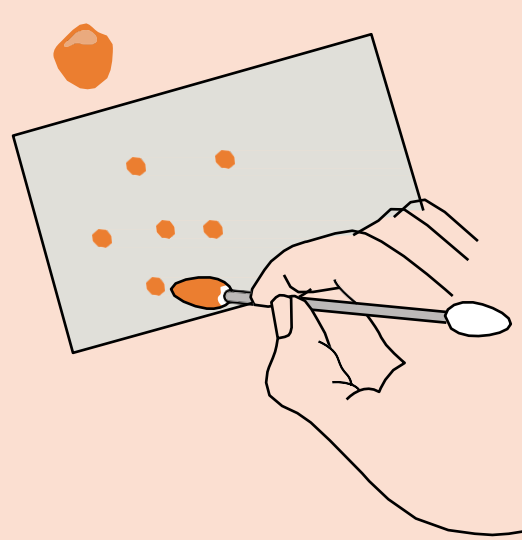
tower



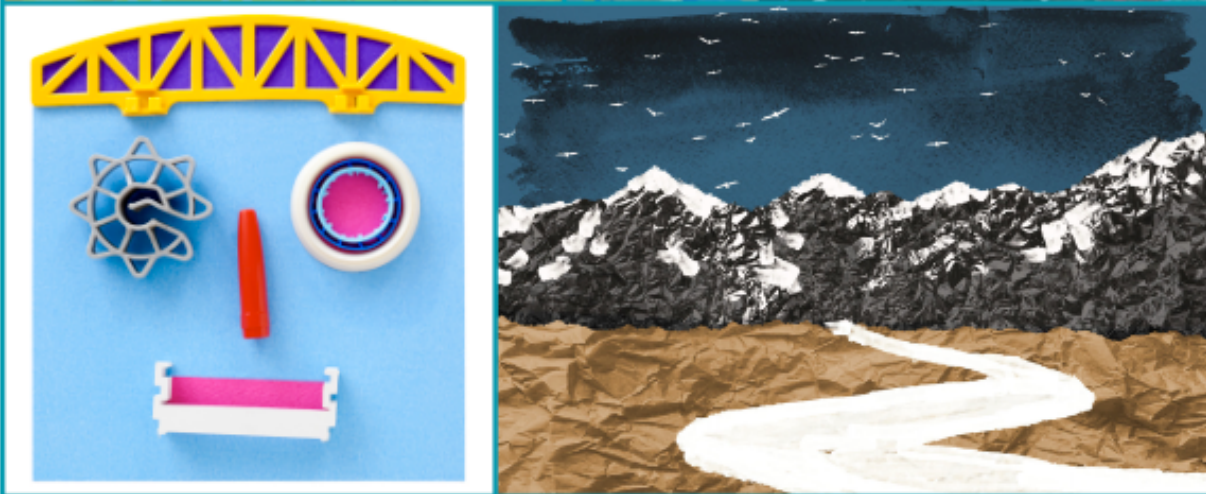
Mixing secondary colours



Painting tools can make textures



### Collage



Arranging materials and sticking them to a surface.

### Romare Bearden 1911-1988

- ▶ His work explored memories, everyday life and the idea that people should be treated equally.
- ▶ He used patterned paper in his collages.
- ▶ He layered other materials on top of the collage paper.

### Overlap materials





**call and response:**

One person sings or plays something and others sing or play something back, in reply.



my turn

What sound does  
a lion make?



your turn

Roar!

**dynamics:**

The volume of a piece of music.



**sound pattern:**

When long and short sounds repeat in a certain way.



I

am

growling



I

am

growling



I

am

growling



## Mechanisms - Making a moving monster

|                        |   |
|------------------------|---|
| <b>Design criteria</b> | A set of rules to help designers focus their ideas and test the success of them.  |
| <b>Evaluation</b>      | When you look at the good and bad points about something, then think about how you could improve it.                                    |
| <b>Input</b>           | The energy that is used to start something working.   |
| <b>Linkage</b>         | Lengths of material (for example, metal or card) that are joined together by pivots, so that the links can move as part of a mechanism. |
| <b>Mechanical</b>      | Something that can move because several pieces work together like a machine.  |
| <b>Mechanism</b>       | A collection of parts that work together to create a movement, eg: a bicycle.   |
| <b>Output</b>          | Output is the motion that happens as a result of starting the input.  |
| <b>Pivot</b>           | The central point, pin, or shaft on which a mechanism turns or swings.  |
| <b>Survey</b>          | To ask a group of people questions about something and to use their answers to make improvements.                                       |

## Key facts

Moving monster

What materials could you use to represent fur, scales and claws?

## The four types of motion:



**Linear motion**  
Movement in a straight line in any one direction.



**Reciprocating motion**  
Movement in a straight line, back and forth, in any direction.



**Rotary motion**  
Movement in a circular motion.



**Oscillating motion**  
Movement in a curve, back and forth.