

## Phonics

Following the Little Wandle scheme this term we will not be learning any new sounds but we will be practising all the sounds and words we have learnt to prepare for our phonics screening check that will take place at the beginning of term 6.

The 'What in the Phonics Screening Check' sheet was given to parents on parents evening. Please refer to that and continue practising the sounds at home.

### What's in the Phonics Screening Check?

All Phase 2 and 3 GPCs are tested.

#### Phase 4: example words

VCC	ant	
CCVC	frog	green
CVCC	best	boast
CCVCC	clump	spoil
CCCV	scrub	three
CCVCV	strict	screen

#### All phases: words ending in -s

hats	keeps	crowds	spikes
------	-------	--------	--------

#### All phases: two-syllable words

panic	model	forest	portrait	blossom
label	saucers	reptiles	reaching	beehive

#### Phase 5 GPCs: vowels

/ai/	a-e	ay		
/ee/	e	ea	e-e	ie
/igh/	i	i-e	ie	
/oa/	o	o-e	ou	ow
/oo/	u-e	ew	ue	ou
/oo/	u	u-e	ew	ue
/oi/	ou			
/oi/	oa			
/oi/	oy			
/ur/	ir			
/or/	au	aw		
/ar/	a*			
/u/	ou			
/oo/	u*			

\*depending on accent

#### Phase 5 GPCs: consonants

/s/ c	/sh/ ch	/c/ ch
/l/ g	/t/ ph	/w/ wh

# Year 1 Term 5 Curriculum Booklet



## Homework

### Little Wandle Reading and Mathematics

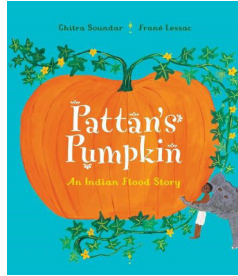
In Year 1, the children are expected to read every night. All homework tasks are communicated via the orange A4 homework book. Children will bring their homework and reading books home every Wednesday. These books must be brought in with their homework completed and books read every Monday. There will be a maths task for children on Freckle to complete every week.



# Elephants and Pandas

Mrs. Kooner, Mrs. Kalapi and  
Miss Punshon

## English



This term, we will be reading 'Pattan's Pumpkin'. It is a story about a flood in Kerala in southern India. Pattan and his wife Kanni grow food which they share with all living creatures. An ailing plant that he nurtures becomes a huge and splendid pumpkin which provides rescue and shelter when dark clouds gather and a flood threatens human, animal and plant life

**Compose a sentence orally before writing it:** To independently compose a sentence orally ready to replicate it in writing.

**Using joining words and correct punctuation:** To independently use 'and' when writing sentences and using correct punctuation like question mark, exclamation mark or full stop.

**Form letters correctly:** form capital letters and lower case letters correctly and the right way round. Use capital letters correctly at the start of a sentence, when writing someone's name, days of the week or months of the year.

## Mathematics

### Maths Hub:

Students will begin to develop their understanding of length and height, mass and volume and multiplication and division.

### White Rose Maths:

- **Length and height:** We will be comparing the lengths and heights of objects along with measuring by using objects and then in centimetres.
- **Mass and volume:** We will compare the weight of objects by using the words heavier and lighter. We will also compare their mass and what full and empty means. We will continue to explore this by comparing the volume and capacity of an object.
- **Multiplication and division:** We will start by counting in 2s, 10s and 5s. We will also learn how to make arrays, doubles, make and recognise equal groups.

## Wider Curriculum

### What is it like to live in Shanghai?

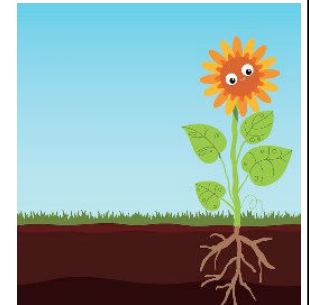
The children will explore the things we see in our local area and map the local area. They will then move onto learning about where China is, what we can see in China and what Shanghai is like and compare it to our local area.



## Science

### Introduction to plants

The children will begin this topic by learning what a plant is and what their different parts are. We will discuss the difference between wild and garden plants, deciduous and evergreen trees and move on to the different parts of the plants that can be consumed.



## RE

### 'Who is Jewish and what do they believe?'

The children will begin to explore what is precious to them and compare that to what is precious to Jewish people. They will then explore the Jewish culture further by discussing what is inside a Mezuzah and what is its significance and why do Jewish people have one.



## Art

### Sculpture and 3D: Paper play

The children will explore making art work by using different cards and different techniques to create 3D drawings. They will make various pictures like tube towers, 3D drawings, tree of life and a giant spider model as a class.

